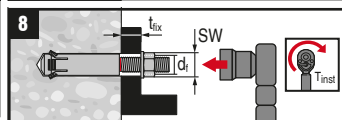
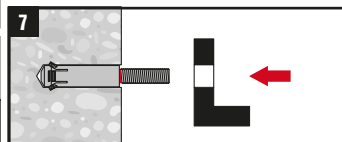
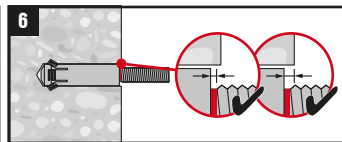
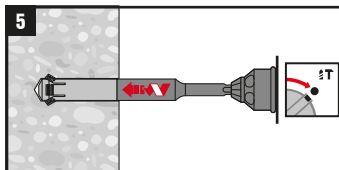
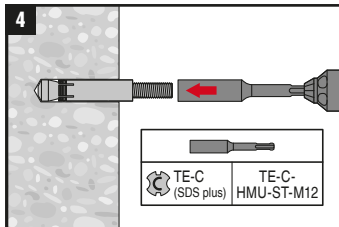
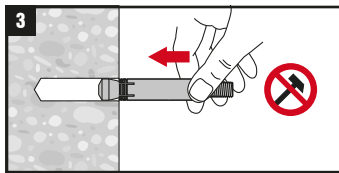
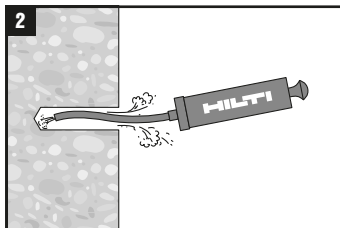


HMU-P/PF		TE-C (SDS plus)	
HMU-P	M12x80/20 M12x80/35	TE-C HMU-B M12x80	TE40 TE 30-A36
HMU-PF	M12x80/20 M12x80/35 M12x80/65		



	HMU-P/PF	t_{fix}	SW	T_{inst}	d_f
HMU-P	M12x80/20	20	19	45Nm (33ft-lb)	14 mm
	M12x80/35	35			
HMU-PF	M12x80/20	20			
	M12x80/35	35			
	M12x80/65	65			