

Hilti CF-F750 Single Component Filling Foam

Sample Submission and Approval Form	2 - 3
Product Information	4
Method Statement	5
Country of Origin	6
Material Safety Data Sheet	7 - 10
Job Reference	11 -25

Make your submission simple!

To download the most updated submission folders and technical manuals, visit <http://www.hilti.com.hk/download>



Recycling one ton of paper saves 17 trees and 7000 gallons of water.

Please consider your environmental responsibility before using the hard copy version!

Customer Hotline

Hong Kong 8228 8118

Macau (Toll free) 00800- 8228 8118

SAMPLE SUBMISSION AND APPROVAL FORM

Contract Title: _____ _____ Contract No: _____ File Reference: _____	Ref. No.: _____ Date: _____ Ref. No. of Previous Submission: _____ (1) _____ (2) _____
---	--

DETAILS OF SUBMISSION

To: Contract Manager's Representative Attention: _____

From: _____

The enclosed sample and catalogue* / certificate of origin* / technical data* / test report* / job reference* as described below have been checked for compliance with the Specifications and Drawings, and are submitted for approval.

1. General Information

- a. Material Description CF-F750 Single Component Filling Foam

- b. Location: _____

- c. Specification Ref. Page: _____ Item: _____
 _____ _____
 _____ _____
- d. Drawing Ref. No. _____

- e. B.Q. Ref.No.: _____

- f. Anticipated date of approval: _____

2. Technical Information

The submitted sample has been checked against the specification and drawings as listed below:-

Specification Requirements	Submitted Sample (State details against each item)
a. Brand Not specified	Hilti
b. Country of Origin Not specified	Estonia
c. Manufacturer's Name & Address Not specified	Hilti Corporation, FL-9494 Principality of Liechtenstein.
d. Factory's Name & Address(es) Not specified	Henkel Makroflex AS, Savi 12 80010 Parnu, Estonia
e. Supplier (with Applicator, if any) Not specified	Hilti (Hong Kong) Ltd

f. Appearance Not specified	According to the sample submitted
g. Color + Not specified	Light yellow
h. Specification Not specified	Attached
i. Manufacturer's Catalogue Not specified	Attached
j. Test Report (Original/Certificated True Copy) Not specified	Attached
k. Previous Job Reference Not specified	Attached
l. Supplementary Information Not specified	NIL

For and on behalf of the Contractor

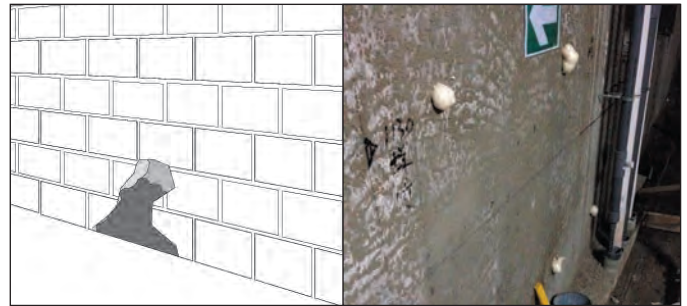
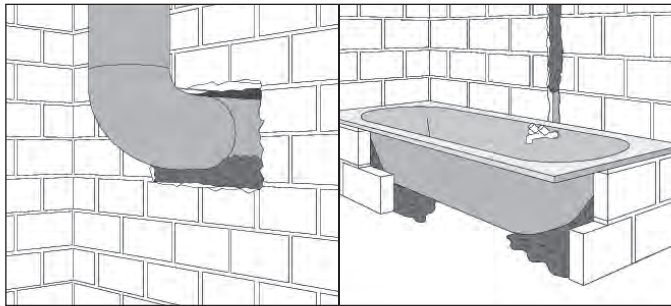
(Quality Control Manager)

CONTRACT MANAGER'S COMMENTS	
To:	
From:	Contract Manager's Representative: _____
On the basis of the sample and information given, the above sample submitted is:	
(1) *	Approved.
(2) *	Not approved because _____
Remarks:	_____ _____ _____
Approval does not alter the requirements of the Contract	
Contract Manager's Representative: _____	
_____ Date: _____	

cc. _____

(* Delete if appropriate)
(+ For glass or vitreous mosaic tiles, the contractor is required to confirm the colour range(s) of the submitted sample, i.e. a) light and or medium; or b) dark)

Single component filling foam CF-F 750



Applications

- Filling
- Pipe penetrations
- Backfilling
- Breaches in walls
- Holes left by concrete forms

Insulation

- Joints around window frames
- Attics
- Drywall
- Water pipes

Advantages

- Contains no CFC's
- Easy to apply using finger adaptor (2-finger operation)
- Contains no formaldehyde and PCB
- No substances harmful to health are released after complete curing, neutral odour
- Does not rot or deteriorate with age
- Long shelf life - constant product quality
- Reusable system components

Technical data at 23°C and 50% relative air humidity

CF-F 750	
Chemical basis	1-component polyurethane foam
Contents of foam can (quantity filled)	750 ml
Foam yield (freely foamed) HTC* 2104 *(Hilti Test of Chemicals)	Up to 34 litres
Minimum temperature Can Base material / air temp.	5°C 5°C
Non-tacky after	approx. 10 min.
Ready to cut / plaster over after	approx. 30 min.
Loadbearing after	approx. 3 to 5 hours
Temperature resistance of cured foam	-40°C to 80°C
Storage and transportation temperature	5°C to 25°C
Building Materials Class (DIN 4102)	B3

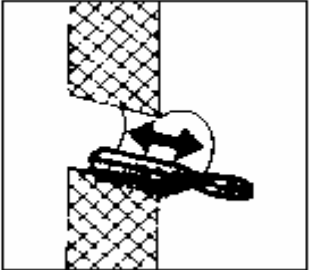
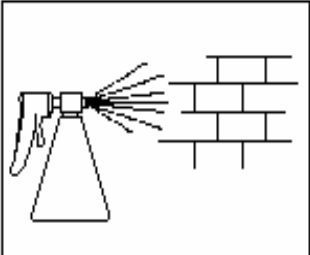
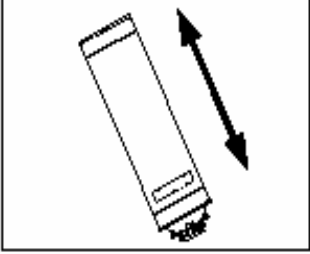
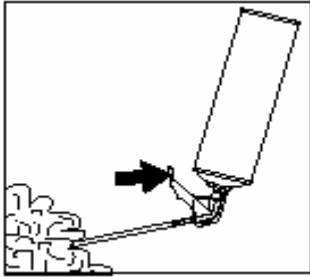
Please refer to the technical data sheet and safety data sheet.



Ordering

Order designation	Package Content	Item No.
1C Filling foam CF-F 750	12	00369811

Hilti CF-F750 Single Component Filling Foam For Wall Tie Hole or Any Filling Applications

Method Statement:	
1. Clean the hole by using a brush if necessary.	
2. Close the end of the hole (by using wooden cork, foam board, etc) for better control if necessary.	
3. Use a fine water spray to pre-moisten the hole, however, avoid the formation of large water droplets on the surface.	
4. Shake the can thoroughly before use (approx. 3 – 5 times).	
5. Fit the finger adaptor and hold the can upside down (valve underneath) when applying the foam.	
6. Start injecting the foam from the bottom of the hole to ensure complete filling. The foam should be moistened between layers when filling the holes.	
7. Wait for the cure of the foam (Approx. 30minutes) and cut the excess material.	

Attn. : To whom it may concern

Date : 28 September 2010
Ref. : LE/ML10017

Subject : Hilti CF-F750 Single Component Filling Foam

Dear Sirs / Madams,

Enclosed please find the information of Hilti CF-F750 Single Component Filling Foam.

Brand Name : Hilti
Model Name : Hilti CF-F750 Single Component Filling Foam
Manufacturer : Hilti Corporation
Address of Manufacturer : FL-9494, Principality of Liechtenstein.
Supplier : Hilti (Hong Kong) Ltd
Address of Supplier : 701-704, Tower A, Manulife Financial Centre,
223 Wai Yip Street, Kwun Tong, Kowloon, Hong Kong
Country of Origin : Estonia

Should you have further questions, please do not hesitate to contact our Technical Representatives or Customer Service Hotline at 8228-8118.

Yours sincerely,
Hilti (Hong Kong) Ltd.


Michael Leung
Marketing Manager




1 Identification of substance:

- **Product details:**
- **Trade name:** **CF-I 750 B3 (/G) ; CF-F 750(600) B3 (/G)**
- **Application of the substance / the preparation** Construction chemicals
- **Manufacturer/Supplier:**
Hilti AG
FL-9494 Schaan
- **Informing department:** see section 16
- **Emergency information:**
Tel.: 00423 / 234 - 2111
Fax.: 00423 / 234 - 2965
Schweizerisches Toxikologisches Informationszentrum - 24 h Service
Tel.: 0041 / 1 251 51 51 (international)

2 Composition/Data on components:

- **Chemical characterization**
- **Description:** Urethane prepolymer with propellant liquified under pressure, containing no CFC

Dangerous components:

CAS: 9016-87-9	diphenylmethanediisocyanate, isomeres and homologues	Xn; R 20-36/37/38-42/43	10-25%
CAS: 13674-84-5 EINECS: 237-158-7	Tris(1-chloro-2-propyl)phosphate	Xn; R 22	10-25%
CAS: 106-97-8 EINECS: 203-448-7	butane, pure	F+; R 12	2,5-10%
CAS: 115-10-6 EINECS: 204-065-8	dimethyl ether	F+; R 12	2-5-10%

- **Additional information** For the wording of the listed risk phrases refer to section 16.

3 Hazards identification
Hazard designation:


Xn Harmful
F+ Extremely flammable

Information pertaining to particular dangers for man and environment

- R 12 Extremely flammable.
- R 36/37/38 Irritating to eyes, respiratory system and skin.
- R 42/43 May cause sensitisation by inhalation and skin contact.
- Contains isocyanates. See information supplied by the manufacturer
- Pressurized container: protect from sunlight and do not expose to temperatures exceeding 50°C. Do not pierce or burn, even after use.
- Do not spray on a naked flame or any incandescent material. Keep away from sources of ignition - No smoking.
- Keep out of the reach of children

Classification system

- The classification is in line with current EC lists. It has been expanded, however, by information from technical literature, by information furnished by suppliers and by national regulations which have to be observed in chapter 15.

4 First aid measures

- **After inhalation** Supply fresh air; consult doctor in case of symptoms.
- **After skin contact**
Treat affected skin portions with cotton wool or cellulose. Then wash and rinse thoroughly with water and a mild cleaning agent.
- **After eye contact** Rinse opened eye for several minutes under running water. Then consult doctor.
- **After swallowing** Do not induce vomiting; instantly call for medical help.
- **Information for doctor**
- **The following symptoms may occur:** Allergic reactions

5 Fire fighting measures

- **Suitable extinguishing agents** CO₂, extinguishing powder or water jet. Fight larger fires with water jet or alcohol-resistant foam.
- **For safety reasons unsuitable extinguishing agents** Water with a full water jet.
- **Special hazards caused by the material, its products of combustion or resulting gases:**
Can be released in case of fire
Carbon monoxide (CO)
Hydrogen chloride (HCl)
Hydrogen fluoride (HF)
Hydrogen cyanide (HCN)
- **Protective equipment:** Wear self-contained breathing apparatus.

(Contd. on page 2)

-FLE-

Trade name: CF-I 750 B3 (/G) ; CF-F 750(600) B3 (/G)

(Contd. of page 1)

· **Additional information** Cool endangered containers with water spray jet.

6 Accidental release measures

- **Person-related safety precautions:**
 - Ensure adequate ventilation
 - Wear protective clothing.
- **Measures for environmental protection:** Do not allow product to reach sewage system or water bodies.
- **Measures for cleaning/collecting:**
 - Allow to solidify. Collect mechanically.
 - Dispose of contaminated material as waste according to item 13.

7 Handling and storage

- **Handling**
- **Information for safe handling:**
 - Ensure good ventilation/exhaustion at the workplace.
 - Ensure good interior ventilation, especially at floor level. (Fumes are heavier than air).
 - Keep away from heat and direct sunlight.
 - Danger of bursting!
- **Information about protection against explosions and fires:**
 - Beware: Container is pressurized. Keep away from direct sun exposure and temperatures over 50°C. Do not open by force or throw into fire even after use.
 - Do not spray on flames or red-hot objects.
 - Keep ignition sources away - Do not smoke.
- **Storage**
- **Requirements to be met by storerooms and containers:**
 - Keep containers securely closed and dry, store at 5 - 25°C.
 - Observe official regulations on storing packagings with pressurized containers.
- **Information about storage in one common storage facility:**
 - Store away from foodstuffs.
 - Store away from flammable substances.
- **Further information about storage conditions:** Protect from heat and direct sunlight.
- **Storage class** As per VCI (1991) storage classification concept.

8 Exposure controls and personal protection

- **Additional information about design of technical systems:** No further data; see item 7.

Components with limit values that require monitoring at the workplace:	
101-68-8 diphenylmethane-4,4'-di-isocyanate (10-25%)	
TLV (European Union)	1920 mg/m ³ , 1000 ml/m ³
115-10-6 dimethyl ether (2,5-10%)	
TLV (European Union)	1920 mg/m ³ , 1000 ml/m ³

- **Additional information:** The lists that were valid during the compilation were used as basis.
- **Personal protective equipment**
- **General protective and hygienic measures**
 - The usual precautionary measures should be adhered to general rules for handling chemicals.
 - Wash hands during breaks and at the end of the work.
 - Avoid contact with the eyes and skin.
 - Do not eat, drink or smoke while working.
- **Breathing equipment:** Use breathing protection in case of insufficient ventilation.
- **Protection of hands:** Protective gloves.
- **Material of gloves** Synthetic gloves
- **Penetration time of glove material**
 - The exact break trough time has to be found out by the manufacturer of the protective gloves and has to be observed.
- **Eye protection:** Safety glasses
- **Body protection:** Protective work clothing.

9 Physical and chemical properties:

General Information	
Form:	Container under gas pressure
Colour:	Light yellow
Odour:	Characteristic
Change in condition	
Melting point/Melting range:	Not determined
Flash point:	Not applicable, as aerosol

(Contd. on page 3)



Trade name: CF-I 750 B3 (/G) ; CF-F 750(600) B3 (/G)

(Contd. of page 2)

· Ignition temperature:	230°C
· Decomposition temperature:	100°C
· Self-inflammability:	Product is not selfigniting.
· Danger of explosion:	In use, may form flammable/explosive vapour-air mixture.
· Critical values for explosion:	
Lower:	1,5 Vol %
Upper:	18,6 Vol %
· Vapour pressure at 20°C:	5,5-6 bar
· Density at 20°C	0,9-1,1 g/cm3
· Solubility in / Miscibility with Water:	Unsoluble

10 Stability and reactivity

- **Thermal decomposition / conditions to be avoided:** No decomposition if used according to specifications.
- **Dangerous reactions**
Reacts with alcohols, amines, aqueous acids and alkalis
With water (moisture): CO₂ is produced; pressure may build up inside closed containers (danger of bursting)
- **Dangerous products of decomposition:** none, if stored and handled correctly.

11 Toxicological information

- **Acute toxicity:**

- **LD/LC50 values that are relevant for classification:**

9016-87-9 diphenylmethanediisocyanate, isomeres and homologues

Oral	LD50	>5000 mg/kg (ratte)
Inhalative	LC50/4 h	0,49 mg/l (ratte)

13674-84-5 Tris(1-chloro-2-propyl)phosphate

Oral	LD50	3600 mg/kg (ratte)
------	------	--------------------

115-10-6 dimethyl ether

Inhalative	LC50/4 h	308 mg/l (ratte)
------------	----------	------------------

106-97-8 butane, pure

Inhalative	LC50/4 h	658 mg/l (ratte)
------------	----------	------------------

- **Primary irritant effect:**
- **on the skin:** Irritant to skin and mucous membranes.
- **on the eye:** Irritant effect.
- **Sensitization:**
Sensitization possible by inhalation.
Sensitization possible by skin contact.
Hypersensitive persons may react at very low concentrations of isocyanate.
- **Additional toxicological information:**
The product shows the following dangers according to the calculation method of the General EC Classification Guidelines for Preparations as issued in the latest version:
Harmful

12 Ecological information:

- **General notes:**

The product reacts with water releasing CO₂, to form a solid, insoluble polycarbamide with a high melting point which, according to present knowledge, is inert and not degradable.
Water hazard class 2 (German Regulation) (Self-assessment): hazardous for water.
Do not allow product to reach ground water, water bodies or sewage system.
Danger to drinking water if even small quantities leak into soil.

13 Disposal considerations

- **Product:**
- **Recommendation** For disposal, local regulations issued by the authorities must be observed.

- **European waste catalogue**

08 00 00	WASTES FROM THE MANUFACTURE, FORMULATION, SUPPLY AND USE (MFSU) OF COATINGS (PAINTS, VARNISHES AND VITREOUS ENAMELS), ADHESIVES, SEALANTS AND PRINTING INKS
08 05 00	wastes not otherwise specified in 08
08 05 01	waste isocyanates

(Contd. on page 4)

-FLE-



Printing date 15.03.2004

Reviewed on 10.03.2004

Trade name: CF-I 750 B3 (/G) ; CF-F 750(600) B3 (/G)

(Contd. of page 3)

- **Uncleaned packagings:**
- **Recommendation:** Disposal must be made according to official regulations.

14 Transport information

- **Land transport ADR/RID (cross-border)**
- **ADR/RID-GGVSE Class:** 2 Gases.
- **UN-Number:** 1950
- **Designation of goods:** Pressurised container
- **Remarks:** 1950 AEROSOLS
Limited quantity: LQ 2

- **Maritime transport IMDG:**
- **IMDG Class:** 2
- **UN Number:** 1950
- **EMS Number:** 2-13
- **Marine pollutant:** No
- **Correct technical name:** AEROSOLS

- **Air transport ICAO-TI and IATA-DGR:**
- **ICAO/IATA Class:** 2.1
- **UN/ID Number:** 1950
- **Correct technical name:** Aerosols, flammable

15 Regulatory information

- **Designation according to EC guidelines:**
The product has been classified and labelled in accordance with EC Directives / Ordinance on Hazardous Materials (GefStoffV)

- **Code letter and hazard designation of product:**



Xn Harmful
F+ Extremely flammable

- **Hazard-determining components of labelling:**
diphenylmethane-4,4'-di-isocyanate

- **Risk phrases:**
12 Extremely flammable.
36/37/38 Irritating to eyes, respiratory system and skin.
42/43 May cause sensitisation by inhalation and skin contact.

- **Safety phrases:**
2 Keep out of the reach of children.
23 Do not breathe aerosol.
25 Avoid contact with eyes.
36/37/39 Wear suitable protective clothing, gloves and eye/face protection.
45 In case of accident or if you feel unwell, seek medical advice immediately (show the label where possible).
51 Use only in well-ventilated areas.

- **Special designation of certain preparations:**
Contains isocyanates. See information supplied by the manufacturer
Pressurised container: protect from sunlight and do not expose to temperatures exceeding 50°C. Do not pierce or burn, even after use.
Do not spray on a naked flame or any incandescent material. Keep away from sources of ignition - No smoking.
Keep out of the reach of children

- **National regulations**

- **Technical instructions (air):**

Class	Share in %
I	10-25
NK	10-25

- **Water hazard class:** Water hazard class 2 (Self-assessment): hazardous for water.

16 Other information:

These data are based on our present knowledge. However, they shall not constitute a guarantee for any specific product features and shall not establish a legally valid contractual relationship.
Changes made since last issue dated 23.10.2004 at the following points: *

- **Relevant R-phrases**
12 Extremely flammable.
20 Harmful by inhalation.

(Contd. on page 5)

-FLE-

Job / Application Reference

Date	Project Name	Contractor	Product Name	Application
May-14	Tsuen Wan Area 7		Filling foam CF-F 750	gap sealing
May-14	MTR - South Island Line	MTRCL	Filling foam CF-F 750	wall tie hole sealing
May-14	MTR - South Island Line	MTRCL	Filling foam CF-F 750	wall tie hole sealing
May-14	MTR - South Island Line	MTRCL	Filling foam CF-F 750	wall tie hole sealing
May-14	Renovation & Maintenance - Public Housing		Filling foam CF-F 750	wall tie hole sealing
May-14	Others Commercial Projects in Macau		Filling foam CF-F 750	wall tie hole sealing
Apr-14	Tsuen Wan Area 7		Filling foam CF-F 750	gap sealing
Apr-14	Tai Po Fung Yuen Chuen		Filling foam CF-F 750	gap sealing
Apr-14	Lok Wo Sha Complex Development	HIP HING / EMAN	Filling foam CF-F 750	wall tie hole sealing
Apr-14	Renovation & Maintenance - Public Housing		Filling foam CF-F 750	gap sealing
Apr-14	MTR - South Island Line	MTRCL	Filling foam CF-F 750	wall tie hole sealing
Apr-14	HKUST Redevelopment		Filling foam CF-F 750	wall tie hole sealing
Apr-14	Renovation & Maintenance - Public Housing		Filling foam CF-F 750	wall tie hole sealing
Apr-14	Others Commercial Projects in Macau		Filling foam CF-F 750	wall tie hole sealing
Apr-14	Macau Studio City	PAUL Y YAU LEE JV	Filling foam CF-F 750	wall tie hole sealing
Mar-14	Tsuen Wan Area 7		Filling foam CF-F 750	gap sealing
Mar-14	Lok Wo Sha Complex Development	HIP HING / EMAN	Filling foam CF-F 750	wall tie hole sealing
Mar-14	Renovation & Maintenance - Public Housing		Filling foam CF-F 750	gap sealing
Mar-14	MTR - South Island Line	MTRCL	Filling foam CF-F 750	wall tie hole sealing
Mar-14	Lohas Park Development		Filling foam CF-F 750	wall tie hole sealing
Mar-14	InterContinental, Holiday Inn and Cosmopolitan (Parcel 3)	Hsin Chong	Filling foam CF-F 750	wall tie hole sealing
Mar-14	Others Private Residential Projects in Macau	China Construction	Filling foam CF-F 750	wall tie hole sealing
Mar-14	Others Private Residential Projects in Macau		Filling foam CF-F 750	wall tie hole sealing
Feb-14	Lok Wo Sha Complex Development	HIP HING / EMAN	Filling foam CF-F 750	wall tie hole sealing
Feb-14	MTR - South Island Line	MTRCL	Filling foam CF-F 750	wall tie hole sealing
Feb-14	Renovation & Maintenance - Public Housing		Filling foam CF-F 750	wall tie hole sealing
Feb-14	Other Private Residential Projects		Filling foam CF-F 750	wall tie hole sealing

Date	Project Name	Contractor	Product Name	Application
Feb-14	InterContinental, Holiday Inn and Cosmopolitan (Parcel 3)	Hsin Chong	Filling foam CF-F 750	wall tie hole sealing
Feb-14	Macau Studio City	Paul Y	Filling foam CF-F 750	wall tie hole sealing
Jan-14	MTR - South Island Line	MTRCL	Filling foam CF-F 750	wall tie hole sealing
Jan-14	Lohas Park Development		Filling foam CF-F 750	wall tie hole sealing
Jan-14	Others Private Residential Projects in Macau	China Construction	Filling foam CF-F 750	wall tie hole sealing
Jan-14	Others Commercial Projects in Macau		Filling foam CF-F 750	Hotel maintenance team
Dec-13	MTR - South Island Line	MTRCL	Filling foam CF-F 750	wall tie hole sealing
Nov-13	Tsuen Wan Area 7		Filling foam CF-F 750	gap sealing
Nov-13	MTR - South Island Line	MTRCL	Filling foam CF-F 750	wall tie hole sealing
Nov-13	Other Private Residential Projects		Filling foam CF-F 750	wall tie hole sealing
Nov-13	Others Private Residential Projects in Macau	China Construction	Filling foam CF-F 750	wall tie hole sealing
Nov-13	Others Commercial Projects in Macau	LEIGHTON CONTRACTORS (ASIA) LIMITED	Filling foam CF-F 750	wall tie hole sealing
Oct-13	Tsuen Wan Area 7		Filling foam CF-F 750	gap sealing
Oct-13	Renovation & Maintenance - Public Housing		Filling foam CF-F 750	gap sealing
Oct-13	Lohas Park Development		Filling foam CF-F 750	wall tie hole sealing
Oct-13	MTR - South Island Line	MTRCL	Filling foam CF-F 750	wall tie hole sealing
Oct-13	Others Private Residential Projects in Macau	China Construction	Filling foam CF-F 750	wall tie hole sealing
Oct-13	Others Private Residential Projects in Macau		Filling foam CF-F 750	wall tie hole sealing
Sep-13	MTR - South Island Line	MTRCL	Filling foam CF-F 750	wall tie hole sealing
Sep-13	HKUST Redevelopment		Filling foam CF-F 750	wall tie hole sealing
Aug-13	Others Private Residential Projects in Macau	China Construction	Filling foam CF-F 750	wall tie hole sealing
Jul-13	Other Civil Projects - WSD, DSD, Highways, Utilities		Filling foam CF-F 750	gap sealing
Jul-13	Tai Po Fung Yuen Chuen		Filling foam CF-F 750	gap sealing
Jul-13	Others Private Residential Projects in Macau	China Construction	Filling foam CF-F 750	wall tie hole sealing
Jul-13	InterContinental, Holiday Inn and Cosmopolitan (Parcel 3)		Filling foam CF-F 750	gap sealing
Jul-13	Renovation & Maintenance Works in Macau		Filling foam CF-F 750	Hotel maintenance team
Jun-13	HKUST Redevelopment		Filling foam CF-F 750	wall tie hole sealing

Date	Project Name	Contractor	Product Name	Application
Jun-13	Other Commercial Projects		Filling foam CF-F 750	wall tie hole sealing
May-13	Tai Po Fung Yuen Chuen		Filling foam CF-F 750	gap sealing
May-13	Tsuen Wan Area 7		Filling foam CF-F 750	gap sealing
May-13	Kai Tak Development		Filling foam CF-F 750	wall tie hole sealing
May-13	NTT Data Centre		Filling foam CF-F 750	wall tie hole sealing
May-13	Others Private Residential Projects in Macau	China Construction	Filling foam CF-F 750	wall tie hole sealing
May-13	Others Commercial Projects in Macau	Hsin Chong	Filling foam CF-F 750	wall tie hole sealing
Apr-13	HKUST Redevelopment		Filling foam CF-F 750	wall tie hole sealing
Apr-13	Others Private Residential Projects in Macau	China Construction	Filling foam CF-F 750	wall tie hole sealing
Mar-13	MTR - South Island Line	HSIN CHONG CONST CO LTD	Filling foam CF-F 750	wall tie hole sealing
Mar-13	MTR - South Island Line	MTRCL	Filling foam CF-F 750	wall tie hole sealing
Mar-13	Others Private Residential Projects in Macau	China Construction	Filling foam CF-F 750	wall tie hole sealing
Feb-13	Lok Wo Sha Complex Development		Filling foam CF-F 750	fire sealing of openings
Jan-13	HKUST Redevelopment	HSIN CHONG CONST CO LTD	Filling foam CF-F 750	wall tie hole sealing
Jan-13	Lok Wo Sha Complex Development	HIP HING CONST CO LTD	Filling foam CF-F 750	gap sealing
Jan-13	Lok Wo Sha Complex Development	HIP HING CONST CO LTD	Filling foam CF-F 750	wall tie hole sealing
Jan-13	MTR - West Island Line		Filling foam CF-F 750	form work sealing
Dec-12	HK EX Data Centre		Filling foam CF-F 750	gap sealing
Dec-12	HSBC Data Centre	HSIN CHONG CONST CO LTD	Filling foam CF-F 750	wall tie hole sealing
Dec-12	Pak Shek Kok Development		Filling foam CF-F 750	gap sealing
Nov-12	Lohas Park Development		Filling foam CF-F 750	gap sealing
Oct-12	Hong Kong University Redevelopment	GAMMON CONSTRUCTION LTD	Filling foam CF-F 750	wall tie hole sealing
Oct-12	Lok Wo Sha Complex Development		Filling foam CF-F 750	gap sealing
Oct-12	Pak Shek Kok Development		Filling foam CF-F 750	gap sealing
Sep-12	Kai Tak Development	CHINA STATE CONST ENG COR	Filling foam CF-F 750	wall tie hole sealing
Sep-12	North Lantau Hospital		Filling foam CF-F 750	fire sealing of openings
Sep-12	Pak Shek Kok Development	CHINA STATE CONST ENG COR	Filling foam CF-F 750	wall tie hole sealing

Date	Project Name	Contractor	Product Name	Application
Sep-12	Seymour Road Residential		Filling foam CF-F 750	gap sealing
Aug-12	HKUST Redevelopment	CHINA STATE CONST ENG COR	Filling foam CF-F 750	wall tie hole sealing
Aug-12	Poly-U Redevelopment		Filling foam CF-F 750	gap sealing
Jul-12	MTR - West Island Line	GAMMON - NISHIMATSU WIL JV	Filling foam CF-F 750	fire sealing of openings
Jul-12	The Venetian Casino Resort		Filling foam CF-F 750	gap sealing
Jun-12	The Venetian Casino Resort		Filling foam CF-F 750	gap sealing
May-12	Poly-U Redevelopment	SHUI ON CONST CO LTD	Filling foam CF-F 750	wall tie hole sealing
May-12	Seymour Road Residential	CHINA STATE CONST ENG COR	Filling foam CF-F 750	wall tie hole sealing
May-12	The Venetian Casino Resort		Filling foam CF-F 750	gap sealing
Apr-12	Chinese University Redevelopment	CHINA STATE CONST ENG COR	Filling foam CF-F 750	wall tie hole sealing
Mar-12	Lohas Park Development		Filling foam CF-F 750	wall tie hole sealing
Mar-12	MTR - South Island Line	LEIGHTON-JOHN HOLLAND JOINT VENTURE	Filling foam CF-F 750	wall tie hole sealing
Feb-12	Tuen Mun Station Development (TMTL 447)		Filling foam CF-F 750	gap sealing
Jan-12	Kai Tak Development	YAU LEE CONST CO LTD	Filling foam CF-F 750	gap sealing
Jan-12	Lohas Park Development	PAUL Y. CONSTRUCTION & ENGINEERING	Filling foam CF-F 750	gap sealing
Nov-11	KCR Tai Wai Depot		Filling foam CF-F 750	gap sealing
Nov-11	Lohas Park Development	CHINA STATE CONST ENG COR	Filling foam CF-F 750	gap sealing
Nov-11	Pak Shek Kok Development		Filling foam CF-F 750	gap sealing
Sep-11	DISNEYLAND		Filling foam CF-F 750	Metal pipe penetration sealing
Sep-11	Lohas Park Development		Filling foam CF-F 750	wall tie hole sealing
Aug-11	DISNEYLAND	THE JARDINE ENG CORP LTD	Filling foam CF-F 750	gap sealing
Jul-11	DISNEYLAND		Filling foam CF-F 750	gap sealing
Jun-11	Kai Tak Development	DRAGAGES HONG KONG LIMITED	Filling foam CF-F 750	gap sealing
May-11	Ocean Park Development		Filling foam CF-F 750	gap sealing
May-11	Pak Shek Kok Development	CHINA STATE CONST ENG COR	Filling foam CF-F 750	gap sealing
Apr-11	Kai Tak Development	CHINA STATE CONST ENG COR	Filling foam CF-F 750	gap sealing
Feb-11	Kai Tak Development	YAU LEE HSIN CHONG JOINT VENTURE	Filling foam CF-F 750	wall tie hole sealing

**Material Safety Data Sheet**
According to 91/155 EEC

Printing date 15.03.2004

Reviewed on 10.03.2004

Trade name: CF-I 750 B3 (/G) ; CF-F 750(600) B3 (/G)

22 Harmful if swallowed.
36/37/38 Irritating to eyes, respiratory system and skin.
42/43 May cause sensitisation by inhalation and skin contact.

(Contd. of page 4)

· Department issuing data specification sheet:

Hilti Corp.
BU Chemicals
Quality/Safety/Environment

Hilti Entwicklungsgesellschaft mbH
Hiltistrasse 26
D-86916 Kaufering
Tel: +49 8191 90 6494
Fax: +49 8191 90 17 6494

· Contact: Michael Kaindl**· * Data compared to the previous version altered.**

FLE

Job/Application Reference

30-Aug-11



<u>Ref No</u>	<u>Date</u>	<u>Project</u>	<u>Contractor</u>	<u>Consulting Engineer</u>	<u>Product</u>	<u>Application</u>
40655	09-10	Shangri-la and Traders HotelsSheraton and St. Regis Hotels (Parcel 5&6)	YUE KEE DECORATION ENG LTD		Filling foam CF-F 750	wall tie hole sealing
40640	09-10	Shangri-la and Traders HotelsSheraton and St. Regis Hotels (Parcel 5&6)	TOP BUILDERS GROUP LTD		Filling foam CF-F 750	wall tie hole sealing
40639	09-10	Shangri-la and Traders HotelsSheraton and St. Regis Hotels (Parcel 5&6)	TOP BUILDERS GROUP LTD		Dispenser foam CF 125-50 750ML	wall tie hole sealing
40378	09-10	MTR West Island Line	HSIN CHONG CONSTRUCTION (ASIA) LTD		Filling foam CF-F 750	wall tie hole sealing
40346	09-10	Hennessy Center Redevelopment	GAMMON CONSTRUCTION LTD		Filling foam CF-F 750	wall tie hole sealing
40345	09-10	Hennessy Center Redevelopment	GAMMON CONSTRUCTION LTD		Dispenser foam CF 125-50 750ML	wall tie hole sealing
40323	09-10	Tamar Development	LEIGHTON-CHINA STATE-VAN OORD J.V.		Filling foam CF-F 750	wall tie hole sealing
40118	05-10	MTR West Island Line	SUN FOOK KONG CONST LTD		Dispenser foam CF 125-50 750ML	gap sealing
39926	03-10	Galaxy Mega Resort	MACAO JIANGHE CURTAIN-WALL ENG		Filling foam CF-F 750	window sealing
39840	02-10	Hotel Grand Lisboa Development	WING CHEUNG ENGINEERING CO LTD		Filling foam CF-F 750	gap sealing
39761	01-10	SHK Development, Tseung Kwan O (Area 56)	CHINA STATE CONST ENG COR		Filling foam CF-F 750	gap sealing
39752	01-10	One Central Macau	FAI WANG ENGENHARIA LDA		Filling foam CF-F 750	gap sealing
39699	01-10	KCRC Tai Wai Depot	YAU LEE CONST CO LTD		Filling foam CF-F 750	wall tie hole sealing
39666	01-10	Galaxy Mega Resort	YAU KWONG YEE KEE ELECTRICAL &		Filling foam CF-F 750	gap sealing

Units 701-704, 7/F, Tower A, Manulife Financial Centre, No 223 Wai Yip Street, Kwun Tong, Kowloon, Hong Kong.
Hotline : 8228 8118 Fax : 29541751

1

Job/Application Reference

30-Aug-11



<u>Ref No</u>	<u>Date</u>	<u>Project</u>	<u>Contractor</u>	<u>Consulting Engineer</u>	<u>Product</u>	<u>Application</u>
38648	08-09	PTM Projects - Sun Hung Kai	LUEN ON ALUM ENGRG CO LTD		Filling foam CF-F 750	wall tie hole sealing
38563	08-09	Wynn Macau Casino	WYNN RESORTS (MACAU) S.A.		Filling foam CF-F 750	gap sealing
38321	07-09	PTM Projects - Paul Y	PAUL Y. BUILDERS LIMITED		Filling foam CF-F 750	wall tie hole sealing
38212	06-09	Four Seasons Hotel, Macau (Parcel 2)	SUNDART ENGINEERING SERVICES		Filling foam CF-F 750	gap sealing
37851	05-09	One Central Macau	SUN KOU NGAI CONST. MATERIAL & ENG.		Filling foam CF-F 750	window sealing
37819	05-09	Lohas Park Phase 1 & Phase 2	ABLE ENG CO LTD		Filling foam CF-F 750	form work sealing
37992	05-09	PTM Projects - Hip Hing	VITAL ENGINEERING CO LTD		Filling foam CF-F 750	Air duct penetration through fire rated board
37703	04-09	KCRC Tai Wai Depot	PYROFOE (M/E) ENGINEERING CO		Filling foam CF-F 750	Metal pipe penetration sealing
37420	03-09	PTM Projects - Hip Hing	JET E & M ENGRG CO LTD		Filling foam CF-F 750	gap sealing
37221	03-09	PTM Projects - Cheung Kong	CHINA RESOURCES CONSTRUCTION CO LTD		Dispenser foam CF 125-50 750ML	wall tie hole sealing
37167	03-09	Macau - Science Centre	TUNG TAT E&M ENG CO LTD		Filling foam CF-F 750	gap sealing
36786	02-09	Four Seasons Hotel, Macau (Parcel 2)	APGRC (MACAU) LIMITED		Filling foam CF-F 750	gap sealing

17/F, Tower 6, China Hong Kong City, 33 Canton Road, Tsimshatsui, Kowloon, Hong Kong.
Hotline : 8228 8118 Fax : 29541751

1

Job/Application Reference

04-Aug-09



Ref No	Date	Project	Contractor	Consulting Engineer	Product	Application
33371	12-08	PTM Projects - Yau Lee	YAU LEE CONST CO LTD		Filling foam CF-F 750 GBD	wall tie hole sealing
33688	12-08	One Central Macau	UNITED RELIANCE CORP LTD		Filling foam CF-F 750 GBD	gap sealing
33690	12-08	One Central Macau	URC - PROJECTS MANAGEMENT (MACAU),		Filling foam CF-F 750 GBD	gap sealing
33982	12-08	KCRC Tai Wai Depot	CHINA STATE CONST ENG COR		Filling foam CF-F 750 GBD	wall tie hole sealing
33366	12-08	PTM Projects - Sun Hung Kai	SANFIELD BLDG CONTRACTOR		Filling foam CF-F 750 GBD	wall tie hole sealing
33964	12-08	PTM Projects - Paul Y	PAUL Y. GENERAL CONTRACTORS LIMITED		Filling foam CF-F 750 GBD	wall tie hole sealing
33352	12-08	PTM Projects - Hsin Chong	HSIN CHONG - YAU LEE JOINT VENTURE		Filling foam CF-F 750 GBD	wall tie hole sealing
33973	12-08	PTM Projects - Shui On	SHUI ON BUILDING CONTRACTORS LTD		Filling foam CF-F 750 GBD	wall tie hole sealing
33941	12-08	PTM Projects - China State	CHINA STATE CONST ENG COR		Filling foam CF-F 750 GBD	wall tie hole sealing
33656	12-08	Galaxy Mega Resort	MACAO JIANGHE CURTAIN-WALL ENG		Filling foam CF-F 750 GBD	window sealing
32868	11-08	PTM Projects - China State	CHINA STATE CONST ENG COR		Filling foam CF-F 750 GBD	wall tie hole sealing
32584	11-08	Galaxy Mega Resort	MACAO JIANGHE CURTAIN-WALL ENG		Filling foam CF-F 750 GBD	window sealing
32493	11-08	PTM Projects - Gammon	GAMMON CONSTRUCTION LTD		Dispenser foam CF 125-50 750ML	wall tie hole sealing
32293	11-08	PTM Projects - Sun Hung Kai	SANFIELD BLDG CONTRACTOR		Filling foam CF-F 750 GBD	wall tie hole sealing
32603	11-08	One Central Macau	JOSEF GARTNER & CO (HK) LTD		Filling foam CF-F 750 GBD	window sealing

Units 701-704, 7/F, Tower A, Manulife Financial Centre, No 223 Wai Yip Street, Kwun Tong, Kowloon, Hong Kong.
Hotline : 8228 8118 Fax : 29541751

1

Job/Application Reference

04-Aug-09



Ref No	Date	Project	Contractor	Consulting Engineer	Product	Application
32299	11-08	PTM Projects - Yau Lee	YAU LEE CONST CO LTD		Filling foam CF-F 750 GBD	wall tie hole sealing
32906	11-08	PTM Projects - Shui On	SHUI ON BUILDING CONTRACTORS		Filling foam CF-F 750 GBD	wall tie hole sealing
32051	11-08	Le Royal Arc	SINFOR PETROLEUM AND CHEMICAL		Filling foam CF-F 750 GBD	gap sealing
32912	11-08	KCRC	CHINA STATE CONST ENG COR		Filling foam CF-F 750 GBD	wall tie hole sealing
32896	11-08	PTM Projects - Paul Y	PAUL Y. GENERAL CONTRACTORS LIMITED		Filling foam CF-F 750 GBD	wall tie hole sealing
32962	11-08	PTM Projects - Paul Y	PYROFOE (M/E) ENGINEERING CO		Filling foam CF-F 750 GBD	Plumbing works fixing
32464	11-08	Dream City Phase 1	ABLE ENG CO LTD	W & O / Mott Connell / PBA	Filling foam CF-F 750 GBD	wall tie hole sealing
32526	11-08	PTM Projects - Hip Hing	HIP HING CONST CO LTD		Dispenser foam CF 125-50 750ML	wall tie hole sealing
31137	10-08	PTM Projects - Yau Lee	YAU LEE CONST CO LTD		Filling foam CF-F 750 GBD	wall tie hole sealing
31292	10-08	PTM Projects - Sun Hung Kai	WANG WAI CONST WORKS LTD		Filling foam CF-F 750 GBD	wall tie hole sealing
31306	10-08	Airport	HANISON CONST CO LTD		Filling foam CF-F 750 GBD	wall tie hole sealing
31723	10-08	PTM Projects - China State	CHINA STATE CONST ENG COR		Filling foam CF-F 750 GBD	wall tie hole sealing
31738	10-08	PTM Projects - Paul Y	PAUL Y. GENERAL CONTRACTORS LIMITED		Filling foam CF-F 750 GBD	wall tie hole sealing
31125	10-08	PTM Projects - Hsin Chong	HSIN CHONG CONSTRUCTION (ASIA) LTD		Filling foam CF-F 750 GBD	wall tie hole sealing
31751	10-08	PTM Projects - Shui On	SHUI ON BUILDING CONTRACTORS		Filling foam CF-F 750 GBD	wall tie hole sealing
31757	10-08	KCRC	CHINA STATE CONST ENG COR		Filling foam CF-F 750 GBD	wall tie hole sealing

Units 701-704, 7/F, Tower A, Manulife Financial Centre, No 223 Wai Yip Street, Kwun Tong, Kowloon, Hong Kong.
Hotline : 8228 8118 Fax : 29541751

2

August 2014

Job/Application Reference

04-Aug-09



Ref No	Date	Project	Contractor	Consulting Engineer	Product	Application
31131	10-08	PTM Projects - Sun Hung Kai	SANFIELD BLDG CONTRACTOR		Filling foam CF-F 750 GBD	wall tie hole sealing
31351	10-08	Le Royal Arc	PAUL Y. CONSTRUCTION COMPANY,LTD.		Filling foam CF-F 750 GBD	wall tie hole sealing
31475	10-08	Shangri-la and Traders HotelsSheraton and St. Regis Hotels (Parcel 5&6)	Gammon Bldg Constr (Macau) Ltd		Dispenser foam CF 125-50 750ML	wall tie hole sealing
30932	10-08	City of Dreams Resort	SUN WAH TAT CONSTRUCTION AND		Filling foam CF-F 750 GBD	gap sealing
31837	10-08	The Venetian Casino Resort (Parcel 1)	SUNDUST LIMITADA		Filling foam CF-F 750 GBD	gap sealing
31394	10-08	Galaxy Mega Resort	MACAO JIANGHE CURTAIN-WALL ENG		Filling foam CF-F 750 GBD	window sealing
30741	09-08	PTM Projects - Paul Y	PYROFOE (M/E) ENGINEERING CO		Filling foam CF-F 750 GBD	gap sealing
30225	09-08	Union Square 7, Kowloon Station	SANFIELD BLDG CONTRACTOR		Filling foam CF-F 750 GBD	wall tie hole sealing
30735	09-08	PTM Projects - Cheung Kong	PYROFOE (M/E) ENGINEERING CO		Filling foam CF-F 750 GBD	gap sealing
30574	09-08	PTM Projects - China State	CHINA STATE CONST ENG COR		Filling foam CF-F 750 GBD	wall tie hole sealing
30602	09-08	PTM Projects - Shui On	SHUI ON CONST CO LTD		Filling foam CF-F 750 GBD	wall tie hole sealing
30601	09-08	PTM Projects - Shui On	SHUI ON BUILDING CONTRACTORS		Filling foam CF-F 750 GBD	wall tie hole sealing
30596	09-08	PTM Projects - Paul Y	PAUL Y. GENERAL CONTRACTORS LIMITED		Filling foam CF-F 750 GBD	wall tie hole sealing
30365	09-08	Shangri-la and Traders HotelsSheraton and St. Regis Hotels (Parcel 5&6)	Gammon Bldg Constr (Macau) Ltd		Dispenser foam CF 125-50 750ML GBD/A	wall tie hole sealing
30279	09-08	Galaxy Mega Resort	MACAO JIANGHE CURTAIN-WALL ENG		Filling foam CF-F 750 GBD	window sealing

Units 701-704, 7/F, Tower A, Manulife Financial Centre, No 223 Wai Yip Street, Kwun Tong, Kowloon, Hong Kong.
Hotline : 8228 8118 Fax : 29541751

3

Job/Application Reference

04-Aug-09



Ref No	Date	Project	Contractor	Consulting Engineer	Product	Application
29497	08-08	PTM Projects - Shui On	SHUI ON BUILDING CONTRACTORS		Filling foam CF-F 750 GBD	wall tie hole sealing
29124	08-08	Kowloon Southern Link (KSL - Link200, 300 & 400)	SANFIELD BLDG CONTRACTOR		Filling foam CF-F 750 GBD	wall tie hole sealing
29476	08-08	PTM Projects - China State	CHINA STATE CONST ENG COR		Filling foam CF-F 750 GBD	wall tie hole sealing
29620	08-08	PTM Projects - Cheung Kong	WA JIU AIR-CONDITIONING ENG CO		Filling foam CF-F 750 GBD	gap sealing
28765	08-08	City of Dreams Resort	SUN WAH TAT CONSTRUCTION AND		Filling foam CF-F 750 GBD	MVAC fixing
29488	08-08	PTM Projects - Paul Y	PAUL Y. GENERAL CONTRACTORS LIMITED		Filling foam CF-F 750 GBD	wall tie hole sealing
28950	08-08	PTM Projects - Yau Lee	YAU LEE CONST CO LTD		Filling foam CF-F 750 GBD	wall tie hole sealing
28469	07-08	PTM Projects - Paul Y	PAUL Y. GENERAL CONTRACTORS LIMITED		Filling foam CF-F 750 GBD	wall tie hole sealing
28479	07-08	PTM Projects - Sun Hung Kai	LUEN ON ALUM ENGRG CO LTD		Filling foam CF-F 750 GBD	gap sealing
28568	07-08	Four Seasons Hotel, Macau (Parcel 2)	APGRC (MACAU) LIMITED		Filling foam CF-F 750 GBD	form work sealing
28371	07-08	MGM Grand Macau	COMPANHIA DE ENGENHARIA LYCON		Filling foam CF-F 750 GBD	gap sealing
28453	07-08	PTM Projects - China State	CHINA STATE CONST ENG COR		Filling foam CF-F 750 GBD	wall tie hole sealing
28463	07-08	PTM Projects - E-man	LUEN ON ALUM ENGRG CO LTD		Filling foam CF-F 750 GBD	gap sealing
27428	06-08	MGM Grand Macau	MAJESTIC ENGINEERING (MACAO) CO LTD		Filling foam CF-F 750 GBD	gap sealing
27347	06-08	PTM Projects - E-man	LUEN ON ALUM ENGRG CO LTD		Filling foam CF-F 750 GBD	gap sealing

Units 701-704, 7/F, Tower A, Manulife Financial Centre, No 223 Wai Yip Street, Kwun Tong, Kowloon, Hong Kong.
Hotline : 8228 8118 Fax : 29541751

4

August 2014

Job/Application Reference

04-Aug-09



Ref No	Date	Project	Contractor	Consulting Engineer	Product	Application
27005	06-08	PTM Projects - China State	CHINA STATE CONST ENG COR		Dispenser foam CF 125-50 750ML GBD/A	wall tie hole sealing
27072	06-08	MGM Grand Macau	CHEVALIER (ALUMINIUM ENG) LTD		Filling foam CF-F 750 GBD	window sealing
27058	06-08	Galaxy Mega Resort	MACAO JIANGHE CURTAIN-WALL ENG		Filling foam CF-F 750 GBD	window sealing
27244	06-08	City of Dreams Resort	COMPANHIA DE CONSTRUCAO &		Filling foam CF-F 750 GBD	gap sealing
26872	06-08	PTM Projects - Yau Lee	YAU LEE CONST CO LTD		Filling foam CF-F 750 GBD	wall tie hole sealing
27375	06-08	PTM Projects - Shui On	SHUI ON BUILDING CONTRACTORS		Filling foam CF-F 750 GBD	wall tie hole sealing
27367	06-08	PTM Projects - Paul Y	PAUL Y. GENERAL CONTRACTORS LIMITED		Filling foam CF-F 750 GBD	wall tie hole sealing
27015	06-08	PTM Projects - Hanison	HANISON CONST CO LTD		Filling foam CF-F 750 GBD	wall tie hole sealing
27135	06-08	Shangri-la and Traders HotelsSheraton and St. Regis Hotels (Parcel 5&6)	Gammon Bldg Constr (Macau) Ltd		Dispenser foam CF 125-50 750ML GBD/A	wall tie hole sealing
27271	06-08	MGM Grand Macau	COMPANHIA DE ENGENHARIA LYCON		Filling foam CF-F 750 GBD	gap sealing
27006	06-08	PTM Projects - China State	CHINA STATE CONST ENG COR		Filling foam CF-F 750 GBD	wall tie hole sealing
25802	05-08	Kowloon Southern Link (KSL - Link200, 300 & 400)	LEIGHTON KUMAGAI JV		Filling foam CF-F 750 GBD	form work sealing
25794	05-08	Tamar Development	LEIGHTON-CHINA STATE-VAN OORD J.V.		Filling foam CF-F 750 GBD	form work sealing
26522	05-08	Redevelopment of Tin Kwong Road Police Quarters	PYROFOE (M/E) ENGINEERING CO	OAP	Filling foam CF-F 750 GBD	building services fixing
25878	05-08	Lohas Park Phase 1 & Phase 2	MAJESTIC ENGINEERING CO LTD		Filling foam CF-F 750 GBD	gap sealing

Units 701-704, 7/F, Tower A, Manulife Financial Centre, No 223 Wai Yip Street, Kwun Tong, Kowloon, Hong Kong.
Hotline : 8228 8118 Fax : 29541751

5

Job/Application Reference

04-Aug-09



Ref No	Date	Project	Contractor	Consulting Engineer	Product	Application
26041	05-08	PTM Projects - Hanison	HANISON CONST CO LTD		Filling foam CF-F 750 GBD	wall tie hole sealing
25836	05-08	PTM Projects - Yau Lee	YAU LEE CONST CO LTD		Filling foam CF-F 750 GBD	wall tie hole sealing
26030	05-08	PTM Projects - China State	CHINA STATE CONST ENG COR		Filling foam CF-F 750 GBD	wall tie hole sealing
26093	05-08	Galaxy Mega Resort	MACAO JIANGHE CURTAIN-WALL ENG		Filling foam CF-F 750 GBD	window sealing
26102	05-08	MGM Grand Macau	CHEVALIER (ALUMINIUM ENG) LTD		Filling foam CF-F 750 GBD	window sealing
26166	05-08	Shangri-la and Traders HotelsSheraton and St. Regis Hotels (Parcel 5&6)	Gammon Bldg Constr (Macau) Ltd		Dispenser foam CF 125-50 750ML GBD/A	wall tie hole sealing
26396	05-08	PTM Projects - Paul Y	PAUL Y. GENERAL CONTRACTORS LIMITED		Filling foam CF-F 750 GBD	wall tie hole sealing
24380	04-08	Redevelopment of Tin Kwong Road Police Quarters	PYROFOE (M/E) ENGINEERING CO	OAP	Filling foam CF-F 750 GBD	Metal pipe penetration sealing
23689	04-08	Union Square 7, Kowloon Station	SANFIELD BLDG CONTRACTOR		Filling foam CF-F 750 GBD	wall tie hole sealing
24195	04-08	PTM Projects - Hip Hing	HIP HING CONST CO LTD		Filling foam CF-F 750 GBD	gap sealing
23736	04-08	PTM Projects - Sun Hung Kai	ACME METAL WORKS INT'L LTD		Filling foam CF-F 750 GBD	cladding / pre-cast panel fixing
23978	04-08	Four Seasons Hotel, Macau (Parcel 2)	TOP BUILDERS INTERNATIONAL CO.LTD		Filling foam CF 116-45 750ML GBD/A	wall tie hole sealing
24199	04-08	PTM Projects - Paul Y	PAUL Y. GENERAL CONTRACTORS LIMITED		Filling foam CF-F 750 GBD	gap sealing
24274	04-08	One Central Macau	SAN YIK AIR CONDITIONING ENG CO LTD		Dispenser foam CF 125-50 750ML GBD/A	UPVC pipe penetration sealing
24207	04-08	PTM Projects - Shui On	SHUI ON BUILDING CONTRACTORS		Filling foam CF-F 750 GBD	gap sealing

Units 701-704, 7/F, Tower A, Manulife Financial Centre, No 223 Wai Yip Street, Kwun Tong, Kowloon, Hong Kong.
Hotline : 8228 8118 Fax : 29541751

August 2014

Job/Application Reference

04-Aug-09



Ref No	Date	Project	Contractor	Consulting Engineer	Product	Application
23674	04-08	PTM Projects - Yau Lee	YAU LEE CONST CO LTD		Filling foam CF-F 750 GBD	wall tie hole sealing
23230	03-08	PTM Projects - Shui On	SHUI ON BUILDING CONTRACTORS		Filling foam CF-F 750 GBD	gap sealing
22833	03-08	PTM Projects - Gammon	GAMMON CONSTRUCTION LTD		Filling foam CF-F 750 GBD	wall tie hole sealing
23088	03-08	PTM Projects - China State	CHINA STATE CONST ENG COR		Filling foam CF-F 750 GBD	wall tie hole sealing
23222	03-08	PTM Projects - Paul Y	PAUL Y. GENERAL CONTRACTORS LIMITED		Filling foam CF-F 750 GBD	gap sealing
22838	03-08	PTM Projects - Sun Hung Kai	SANFIELD BLDG CONTRACTOR		Dispenser foam CF 125-50 750ML GBD/A	wall tie hole sealing
22427	02-08	Union Square Phase 7	SANFIELD BLDG CONTRACTOR	OAP / JRP	Filling foam CF-F 750 GBD	wall tie hole sealing
22589	02-08	City of Dreams Resort	LEIGHTON - CHINA STATE - JOHN		Filling foam CF-F 750 GBD	gap sealing
22148	01-08	Four Seasons Hotel, Macau (Parcel 2)	TOP BUILDERS INTERNATIONAL CO.LTD		Filling foam CF 116-45 750ML GBD/A	wall tie hole sealing
21981	01-08	Skycity Marriott Hotel	DRAGAGES HONG KONG LIMITED	OAP / JRP	Dispenser foam CF 125-50 750ML GBD/A	wall tie hole sealing
22182	01-08	Yeung Uk Road Redevelopment	CHINA STATE CONST ENG COR	C M Wong / Mot Connell	Filling foam CF-F 750 GBD	gap sealing
22161	01-08	Shangri-la and Traders HotelsSheraton and St. Regis Hotels (Parcel 5&6)	SUN FOOK KONG - KUN FAI ENGINEERING		Filling foam CF 116-45 750ML GBD/A	wall tie hole sealing
22035	01-08	Tai Lin Pai Road Commercial Development	ACME METAL WORKS INT'L LTD	OAP	Filling foam CF-F 750 GBD	window fixing

Units 701-704, 7/F, Tower A, Manulife Financial Centre, No 223 Wai Yip Street, Kwun Tong, Kowloon, Hong Kong.
Hotline : 8228 8118 Fax : 29541751

7

Job/Application Reference

19-May-08



Ref No	Date	Project	Contractor	Consulting Engineer	Product	Application
21110	12-07	Redevelopment of Tin Kwong Road Police Quarters	PAUL Y. GENERAL CONTRACTORS LIMITED	OAP	Filling foam CF-F 750 GBD	gap sealing
20940	12-07	Shangri-la, Sheraton Hotels, Macau	Gammon Bldg Constr (Macau) Ltd	OAP / PBA / Arup Façade	Dispenser foam CF 125-50 750ML GBD/A	wall tie hole sealing
20935	12-07	Four Seasons Hotel, Macau	TOP BUILDERS INTERNATIONAL CO.LTD	OAP / PBA / Arup Façade	Filling foam CF-F 750 GBD	wall tie hole sealing
20988	12-07	Tsuen Wan Town Center Redevelopment	CHINA STATE CONST ENG COR	C M Wong / Wong & Ouyang	Filling foam CF-F 750 GBD	wall tie hole sealing
20426	12-07	Four Seasons Hotel, Macau	APGRC (MACAU) LIMITED	OAP / PBA / Arup Façade	Filling foam CF-F 750 GBD	cladding / pre-cast panel fixing
21199	12-07	Four Seasons Hotel, Macau	APGRC (MACAU) LIMITED	OAP / PBA / Arup Façade	Filling foam CF-F 750 GBD	gap sealing
21314	12-07	Skycity Marriott Hotel	AVATAR CONSTRUCTION ENGINEERING	OAP / JRP	Filling foam CF-F 750 GBD	wall tie hole sealing
20655	12-07	Fanling Area 36 Phase 1	YAU LEE CONST CO LTD		Filling foam CF-F 750 GBD	wall tie hole sealing
21304	12-07	Redevelopment of Tin Kwong Road Police Quarters	PYROFOE (M/E) ENGINEERING CO	OAP	Filling foam CF-F 750 GBD	Plumbing works fixing
21109	12-07	E Max	SUN FOOK KONG CONST LTD	WMKY / PBA	Dispenser foam CF 125-50 750ML GBD/A	gap sealing
20701	12-07	MGM Grand Macau	MAJESTIC ENGINEERING (MACAO) CO LTD	Siu Yin Wai / JRP / Hyder	Filling foam CF-F 750 GBD	gap sealing
21160	12-07	MGM Grand Macau	MAJESTIC ENGINEERING (MACAO) CO LTD	Siu Yin Wai / JRP / Hyder	Filling foam CF-F 750 GBD	gap sealing
18722	11-07	Arcdetriomphe Macau	PAUL Y. CONSTRUCTION COMPANY,LTD.	Wong Pak Lam / JRP	Filling foam CF-F 750 GBD	wall tie hole sealing
19113	11-07	The Venetian Casino Resort, Macau	APGRC (MACAU) LIMITED	OAP / PBA / Hyder / Arup Façade	Filling foam CF-F 750 GBD	gap sealing
18465	11-07	Yeung Uk Road Redevelopment	YEE TAT PLUMBING DRAINAGE ENG	C M Wong / Mot Connell	Filling foam CF-F 750 GBD	form work sealing
18711	11-07	Dream City Phase 1	ABLE ENG CO LTD	W & O / Mott Connell / PBA	Filling foam CF-F 750 GBD	wall tie hole sealing

Units 701-704, 7/F, Tower A, Manulife Financial Centre, No 223 Wai Yip Street, Kwun Tong, Kowloon, Hong Kong.
Hotline : 8228 8118 Fax : 29541751

Job/Application Reference

19-May-08



Ref No	Date	Project	Contractor	Consulting Engineer	Product	Application
18476	11-07	Fanling Area 36 Phase 1	YAU LEE CONST CO LTD		Filling foam CF-F 750 GBD	wall tie hole sealing
18813	11-07	Four Seasons Hotel, Macau	WAI CHEUK (MACAU) CONSTRUCTION	OAP / PBA / Arup Façade	Filling foam CF 116-45 750ML GBD/A	wall tie hole sealing
18808	11-07	Four Seasons Hotel, Macau	TOP BUILDERS INTERNATIONAL CO.LTD	OAP / PBA / Arup Façade	Filling foam CF-F 750 GBD	wall tie hole sealing
19043	11-07	Arcdetriomphe Macau	PAUL Y. CONSTRUCTION COMPANY,LTD.	Wong Pak Lam / JRP	Filling foam CF-F 750 GBD	gap sealing
18817	11-07	Shangri-la, Sheraton Hotels, Macau	Gammon Bldg Constr (Macau) Ltd	OAP / PBA / Arup Façade	Dispenser foam CF 125-50 750ML GBD/A	wall tie hole sealing
17405	10-07	Union Square Phase 7	SANFIELD BLDG CONTRACTOR	OAP / JRP	Dispenser foam CF 125-50 750ML GBD/A	wall tie hole sealing
17776	10-07	Tsuen Wan Town Center Redevelopment	CHINA STATE CONST ENG COR	C M Wong / Wong & Ouyang	Filling foam CF-F 750 GBD	wall tie hole sealing
17606	10-07	Dream City Phase 1	ABLE ENG CO LTD	W & O / Mott Connell / PBA	Filling foam CF-F 750 GBD	wall tie hole sealing
16335	09-07	Union Square Phase 7	SANFIELD BLDG CONTRACTOR	OAP / JRP	Dispenser foam CF 125-50 750ML GBD/A	wall tie hole sealing
16404	09-07	The Venetian Casino Resort, Macau	CRAFT PROJECTS (HK) CO LTD	OAP / PBA / Hyder / Arup Façade	Dispenser foam CF 125-50 750ML GBD/A	cladding / pre-cast panel fixing
16550	09-07	MGM Grand Macau	KIN PANG CONSTRUCTION & ENGINEERING	Siu Yin Wai / JRP / Hyder	Filling foam CF-F 750 GBD	wall tie hole sealing
16508	09-07	Arcdetriomphe Macau	PAUL Y. CONSTRUCTION COMPANY,LTD.	Wong Pak Lam / JRP	Filling foam CF-F 750 GBD	wall tie hole sealing
16621	09-07	Public Housing Fanling Area 36 Phase 2	CHINA STATE CONST ENG COR	Housing Authority	Filling foam CF-F 750 GBD	wall tie hole sealing
16861	09-07	The Venetian Casino Resort, Macau	CRAFT PROJECTS (HK) CO LTD	OAP / PBA / Hyder / Arup Façade	Filling foam CF-F 750 GBD	gap sealing
16167	09-07	The Venetian Casino Resort, Macau	EUROTECH ENGINEERING CO. LTD.	OAP / PBA / Hyder / Arup Façade	Filling foam CF-F 750 GBD	gap sealing

Units 701-704, 7/F, Tower A, Manulife Financial Centre, No 223 Wai Yip Street, Kwun Tong, Kowloon, Hong Kong.
Hotline : 8228 8118 Fax : 29541751

August 2014

Job/Application Reference

19-May-08



Ref No	Date	Project	Contractor	Consulting Engineer	Product	Application
16414	09-07	Chinese University Shatin Hotel Development	MIDI ALUM FABRICATOR LTD	Wong Pak Lam / PBA	Dispenser foam CF 125-50 750ML GBD/A	curtain wall fixing
16859	09-07	The Venetian Casino Resort, Macau	CRAFT PROJECTS (HK) CO LTD	OAP / PBA / Hyder / Arup Façade	Dispenser foam CF 125-50 750ML GBD/A	gap sealing
16502	09-07	Dream City Phase 1	ABLE ENG CO LTD	W & O / Mott Connell / PBA	Filling foam CF-F 750 GBD	wall tie hole sealing
16406	09-07	The Venetian Casino Resort, Macau	CRAFT PROJECTS (HK) CO LTD	OAP / PBA / Hyder / Arup Façade	Filling foam CF-F 750 GBD	cladding / pre-cast panel fixing
15583	08-07	Four Seasons Hotel, Macau	WAI CHEUK (MACAU) CONSTRUCTION	OAP / PBA / Arup Façade	Filling foam CF 116-45 750ML GBD/A	wall tie hole sealing
15004	08-07	Crown Macau	TUNG TAT E&M ENG CO LTD	Maunsell	Filling foam CF-F 750 GBD	gap sealing
15239	08-07	One Island East	GAMMON CONSTRUCTION LTD	Wong & Ouyang / Meinhardt	Dispenser foam CF 125-50 750ML GBD/A	wall tie hole sealing
11159	07-07	Housing redevelopment Choi Wan Road Ph 3	Shui On		Filling foam CF-F 750 GBD	wall tie hole sealing
11158	07-07	Housing redevelopment Yau Tong Ph 4	Shui On		Filling foam CF-F 750 GBD	wall tie hole sealing
11160	07-07	Housing redevelopment Shek Mun	Paul-Y		Filling foam CF-F 750 GBD	wall tie hole sealing
14245	07-07	Wynn Macau Casino, Macau	PERMASTEELISA MACAU LIMITED	Wong & Ouyang	Filling foam CF-F 750 GBD	window fixing
14584	07-07	Wynn Macau Casino, Macau	PERMASTEELISA MACAU LIMITED	Wong & Ouyang	Filling foam CF-F 750 GBD	gap sealing
13864	07-07	Union Square Phase 7	WUI FAI ENG CO LTD	OAP / JRP	Filling foam CF-F 750 GBD	wall tie hole sealing
11161	07-07	Housing redevelopment Tin Shui Wai Area 104	Paul-Y		Filling foam CF-F 750 GBD	wall tie hole sealing
14368	07-07	Las Vegas Sands Casino Extension, Macau	HIP LIK (MACAO) ENGINEERING LIMITED	OAP / PBA / Arup Façade	Dispenser foam CF 125-50 750ML GBD/A	gap sealing
14168	07-07	Skycity Marriott Hotel	DRAGAGES HONG KONG LIMITED	OAP / JRP	Filling foam CF-F 750 GBD	wall tie hole sealing

Units 701-704, 7/F, Tower A, Manulife Financial Centre, No 223 Wai Yip Street, Kwun Tong, Kowloon, Hong Kong.
Hotline : 8228 8118 Fax : 29541751

Job/Application Reference

19-May-08



Ref No	Date	Project	Contractor	Consulting Engineer	Product	Application
14041	07-07	The Venetian Casino Resort, Macau	CRAFT PROJECTS (HK) CO LTD	OAP / PBA / Hyder / Arup Façade	Filling foam CF-F 750 GBD	gap sealing
14536	07-07	The Venetian Casino Resort, Macau	MEI CHEONG CONST CO LTD	OAP / PBA / Hyder / Arup Façade	Filling foam CF-F 750 GBD	gap sealing
14204	07-07	Hong Kong Cyberport	CHINA STATE- CHINA RESOURCES	Siu Yin Wai & Associates	Filling foam CF-F 750 GBD	wall tie hole sealing
14237	07-07	The Venetian Casino Resort, Macau	CRAFT PROJECTS (HK) CO LTD	OAP / PBA / Hyder / Arup Façade	Filling foam CF-F 750 GBD	cladding / pre-cast panel fixing
11157	07-07	Housing redevelopment Lam Tin Ph 7	Shui On		Filling foam CF-F 750 GBD	wall tie hole sealing
13528	06-07	Public Housing Fanling Area 36 Phase 2	CHINA STATE CONST ENG COR	Housing Authority	Filling foam CF-F 750 GBD	wall tie hole sealing
13592	06-07	Chinese University Shatin Hotel Development	MIDI ALUM FABRICATOR LTD	Wong Pak Lam / PBA	Dispenser foam CF 125-50 750ML GBD/A	window fixing
13535	06-07	Lai Chi Kok Viaduct (HY/2003/01)	ACCIONA INTRAESTRUCTURAS, S.A.	Maunsell Hyder JV	Filling foam CF-F 750 GBD	gap sealing
13678	06-07	Dream City Phase 1	ABLE ENG CO LTD	W & O / Mott Connell / PBA	Filling foam CF-F 750 GBD	wall tie hole sealing
13741	06-07	Dream City Phase 1	MAJESTIC ENGINEERING CO LTD	W & O / Mott Connell / PBA	Filling foam CF-F 750 GBD	gap sealing
13509	06-07	One Island East	GAMMON CONSTRUCTION LTD	Wong & Ouyang / Meinhardt	Dispenser foam CF 125-50 750ML GBD/A	wall tie hole sealing
7653	05-07	Las Vegas Sands Casino Extension, Macau	SFK	OAP / PBA / Arup Façade	Filling foam CF116-45	wall tie hole sealing
13161	05-07	Dream City Phase 1	ABLE ENG CO LTD	W & O / Mott Connell / PBA	Filling foam CF-F 750 GBD	wall tie hole sealing
13077	05-07	Chinese University Shatin Hotel Development	MIDI ALUM FABRICATOR LTD	Wong Pak Lam / PBA	Dispenser foam CF 125-50 750ML GBD/A	window fixing
12989	05-07	Fanling Area 36 Phase 1	YAU LEE CONST CO LTD		Filling foam CF-F 750 GBD	wall tie hole sealing
13271	05-07	Tiu Keng Leng Station Residential Development Package 1	PAUL Y. CONSTRUCTION & ENGINEERING	Maunsell	Filling foam CF-F 750 GBD	gap sealing

Units 701-704, 7/F, Tower A, Manulife Financial Centre, No 223 Wai Yip Street, Kwun Tong, Kowloon, Hong Kong.
Hotline : 8228 8118 Fax : 29541751

August 2014

Job/Application Reference

19-May-08



Ref No	Date	Project	Contractor	Consulting Engineer	Product	Application
11764	04-07	Dream City Phase 2	ABLE ENG CO LTD	Maunsell / Meinhardt	Filling foam CF-F 750 GBD	wall tie hole sealing
11491	04-07	Hong Kong Disneyland	CAPTURE CONSTRUCTION LTD	OAP / Maunsell / Meinhardt	Filling foam CF-F 750 GBD	gap sealing
10944	03-07	Coastal Skyline Low-rise Condominiums	ABLE ENG CO LTD	Maunsell / Meinhardt	Dispenser foam CF 125-50 750ML GBD/A	wall tie hole sealing
10886	03-07	Dream City Phase 1	ABLE ENG CO LTD	W & O / Mott Connell / PBA	Filling foam CF-F 750 GBD	gap sealing
10494	03-07	Las Vegas Sands Casino Extension, Macau	HIP LIK (MACAO) ENGINEERING LIMITED	OAP / PBA / Arup Façade	Dispenser foam CF 125-50 750ML GBD/A	form work sealing
11086	02-07	Enterprise Square 5	CHINA STATE CONST ENG COR	Siu Yin Wai / Meinhardt	Filling foam CF-F 750 GBD	wall tie hole sealing
9819	01-07	The Venetian Casino Resort, Macau	HOI KO (MACAU) CO.LTD	OAP / PBA / Hyder / Arup Façade	Filling foam CF-F 750 GBD	gap sealing
8152	12-06	Las Vegas Sands Casino Extension, Macau	COMPANHIA DE ENG & CONST	OAP / PBA / Arup Façade	Filling foam CF 116-45 750ML GBD/A	wall tie hole sealing
11162	12-06	Housing redevelopment Kwai Chung Ph3	Yau Lee		Filling foam CF-F 750 GBD	wall tie hole sealing
11163	12-06	Housing redevelopment Un Chau Estate Ph 2	Yau Lee		Filling foam CF-F 750 GBD	wall tie hole sealing
11166	12-06	Housing redevelopment Choi Wan Road Ph 1/2	China State		Filling foam CF-F 750 GBD	wall tie hole sealing
11167	12-06	Housing redevelopment Yau Tong Ph 3	China State		Filling foam CF-F 750 GBD	wall tie hole sealing
11168	12-06	Housing redevelopment Tin Shui Wai Area 103 Ph 1	China State		Filling foam CF-F 750 GBD	wall tie hole sealing
11169	12-06	Housing redevelopment Fanling Area 56 Ph 2	China State		Filling foam CF-F 750 GBD	wall tie hole sealing
8095	11-06	Union Square Phase 6	WUI LOONG SCAFFOLDING WKS LTD	OAP / JRP	Filling foam CF-F 750 GBD	scaffolding fixing

Units 701-704, 7/F, Tower A, Manulife Financial Centre, No 223 Wai Yip Street, Kwun Tong, Kowloon, Hong Kong.
Hotline : 8228 8118 Fax : 29541751

5

Job/Application Reference

19-May-08



Ref No	Date	Project	Contractor	Consulting Engineer	Product	Application
7614	10-06	Grand Waterfront, Tokwawan	EVEREST ENTERPRISE (ASIA) CO LTD	Stephen Cheng / Meinhardt	Filling foam CF-F 750 GBD	gap sealing
7702	10-06	One Silver Sea	CHINA STATE CONST ENG COR	Maunsell	Filling foam CF-F 750 GBD	wall tie hole sealing
8806	10-06	The Venetian Casino Resort, Macau	ATAL ENGINEERING(MACAO) LTD	OAP / PBA / Hyder / Arup Façade	Filling foam CF-F 750 GBD	gap sealing
7630	09-06	Science Park Phase 2	BEDROCK ENGINEERING COMPANY	Meinhardt / Maunsell	Filling foam CF-F 750 GBD	wall tie hole sealing
7674	09-06	Hong Kong Cyberport	CHINA STATE- CHINA RESOURCES	Siu Yin Wai & Associates	Filling foam CF-F 750 GBD	gap sealing
7618	08-06	Hoi Fai Road Lot 11152	CHEUNG FUNG PLUMBING & DRAINAGE CO		Filling foam CF-F 750 GBD	gap sealing
7624	08-06	Union Square Phase 6	SANFIELD BLDG CONTRACTOR	OAP / JRP	Filling foam CF-F 750 GBD	wall tie hole sealing
7620	07-06	Grand Waterfront, Tokwawan	JOINT EFFORT ENG (ASIA) LTD	Stephen Cheng / Meinhardt	Filling foam CF-F 750 GBD	gap sealing
7617	07-06	Tsuen Wan Town Center Redevelopment	CHEUNG FUNG PLUMBING AND	C M Wong / Wong & Ouyang	Filling foam CF-F 750 GBD	gap sealing
7623	07-06	Union Square Phase 5	SANFIELD BLDG CONTRACTOR	OAP / PBA	Filling foam CF-F 750 GBD	wall tie hole sealing
5902	06-06	Grand Waterfront, Tokwawan	LUEN ON ALUM ENGRG CO LTD	Stephen Cheng / Meinhardt	Filling foam CF-F 750 GBD	window fixing
9250	06-06	The Venetian Casino Resort, Macau	TANG FAT ENG CO LTD	OAP / PBA / Hyder / Arup Façade	Filling foam CF-F 750 GBD	gap sealing
8914	06-06	MGM Grand Macau	COMPANHIA DE ENGENHARIA CONTRA	Siu Yin Wai / JRP / Hyder	Filling foam CF-F 750 GBD	gap sealing
9125	05-06	The Venetian Casino Resort, Macau	MEI CHEONG CONST CO LTD	OAP / PBA / Hyder / Arup Façade	Dispenser foam CF 125-50 750ML GBD/A	gap sealing
7619	05-06	Wynn Macau Casino, Macau	FORTUNE UNIVERSE LTD	Wong & Ouyang	Filling foam CF-F 750 GBD	gap sealing

Units 701-704, 7/F, Tower A, Manulife Financial Centre, No 223 Wai Yip Street, Kwun Tong, Kowloon, Hong Kong.
Hotline : 8228 8118 Fax : 29541751

August 2014

6

Job/Application Reference

19-May-08



Ref No	Date	Project	Contractor	Consulting Engineer	Product	Application
5900	04-06	Grand Waterfront, Tokwawan	LUEN ON ALUM ENGRG CO LTD	Stephen Cheng / Meinhardt	Dispenser foam CF 125-50 750ML GBD/A	window fixing
8928	04-06	The Venetian Casino Resort, Macau	EMPRESA DE INSTALACOES E ENG LTD	OAP / PBA / Hyder / Arup Façade	Filling foam CF-F 750 GBD	MVAC fixing
8744	04-06	Las Vegas Sands Casino Extension, Macau	TYSAN CONSTRUCTION (MACAU) LIMITED	OAP / PBA / Arup Façade	Filling foam CF-F 750 GBD	wall tie hole sealing
8924	04-06	The Venetian Casino Resort, Macau	ELECTRICAL INSTALLATIONS WAI FAT	OAP / PBA / Hyder / Arup Façade	Dispenser foam CF 125-50 750ML GBD/A	gap sealing
7622	03-06	The Legend	WONG PO KEE LIMITED	Greg Wong / Maunsell	Filling foam CF-F 750 GBD	gap sealing
8311	03-06	Hotel Grand Lisboa, Macau	HIP HING ENGINEERING (MACAU) CO LTD	Maunsell / PBA	Filling foam CF-F 750 GBD	gap sealing
9203	03-06	Macau Fisherman's Wharf	SANDERSON GROUP THEME PARK	Civil Engineering Consultants / Tecproeng Macau	Dispenser foam CF 125-50 750ML GBD/A	form work sealing
7616	03-06	Deep Bay Link - Southern Section (HY/2002/23)	MING HING WATERWORKS ENG. CO., LTD.	Ove Arup & Partners	Filling foam CF-F 750 GBD	gap sealing
7631	02-06	Lai Chi Kok Bus Depot Redevelopment	ACME METAL WORKS INT'L LTD	Siu Yin Wai & Associates / JRP	Filling foam CF-F 750 GBD	window sealing
8282	02-06	The Venetian Casino Resort, Macau	Gammon Bldg Constr (Macau) Ltd	OAP / PBA / Hyder / Arup Façade	Dispenser foam CF 125-50 750ML GBD/A	wall tie hole sealing
8154	02-06	The Venetian Casino Resort, Macau	COMPANHIA DE ENG & CONST	OAP / PBA / Hyder / Arup Façade	Filling foam CF-F 750 GBD	wall tie hole sealing
8418	02-06	Wynn Macau Casino, Macau	Leighton-China State Joint Venture	Wong & Ouyang	Filling foam CF-F 750 GBD	gap sealing
7627	02-06	One Island East	GAMMON CONSTRUCTION LTD	Wong & Ouyang / Meinhardt	Dispenser foam CF 125-50 750ML GBD/A	wall tie hole sealing
7615	02-06	Union Square Phase 6	FEI LUNG ENGINEERING CO LTD	OAP / JRP	Filling foam CF-F 750 GBD	gap sealing
7613	02-06	Chelsea Court, Tsuen Wan	MING KEE ENGINEERING CO.	Sun Hung Kai Engineering	Filling foam CF-F 750 GBD	gap sealing

Units 701-704, 7/F, Tower A, Manulife Financial Centre, No 223 Wai Yip Street, Kwun Tong, Kowloon, Hong Kong.
Hotline : 8228 8118 Fax : 29541751

Job/Application Reference

19-May-08



Ref No	Date	Project	Contractor	Consulting Engineer	Product	Application
9398	02-06	Wynn Macau Casino, Macau	CHONG SON OBRAS E LMOBILIARIO	Wong & Ouyang	Filling foam CF-F 750 GBD	wall tie hole sealing
8713	01-06	The Venetian Casino Resort, Macau	TOP BUILDERS INTERNATIONAL CO.LTD	OAP / PBA / Hyder / Arup Façade	Filling foam CF-F 750 GBD	wall tie hole sealing
7626	01-06	Landmark Redevelopment	GAMMON CONSTRUCTION LTD	Maunsell / Meinhardt	Dispenser foam CF 125-50 750ML GBD/A	wall tie hole sealing
7628	01-06	East Rail Ext - Pedestrian Subway to MTR	GAMMON-NISHIMATSU JOINT VENTURE	KCRC	Filling foam CF-F 750 GBD	wall tie hole sealing
7629	01-06	ICAC Headquarters	SHUI ON CONST CO LTD	Atkins China / JRP	Filling foam CF-F 750 GBD	wall tie hole sealing
11164	12-05	Housing redevelopment Tin Shui Wai Area 103 Ph2	Nishimatsu		Filling foam CF-F 750 GBD	wall tie hole sealing
11165	12-05	Housing redevelopment Aldrich Bay Ph 5	Nishimatsu		Filling foam CF-F 750 GBD	wall tie hole sealing

Units 701-704, 7/F, Tower A, Manulife Financial Centre, No 223 Wai Yip Street, Kwun Tong, Kowloon, Hong Kong.
Hotline : 8228 8118 Fax : 29541751

August 2014